

OXFORD **CAMBRIDGE**



**WOMEN
IN ATHLETICS**
Catalogue



The **Museum of World Athletics™**, or **MOWA**, is a 3D fully virtual museum of athletics, which will take you on an interactive journey through the history of athletics, highlighting many of the legends of the sport.

MOWA, which is the first sports museum to be established in the digital world, gives visitors a unique 3D online experience, highlighting key athletics champions from each continent, and celebrating each edition of the World Athletics Championships.

Through realistic interactive content, including state-of-the-art 360 photographic reproduction of items donated by the athletes, MOWA's five galleries bring to life the stories of athletics. MOWA is available in English, French and Spanish.



www.tinyurl.com/visitMOWA



www.worldathletics.org/heritage



www.facebook.com/museumofworldathletics

Women Artefacts Display



Fanny Blankers-Koen (NED)

1948 Olympic accreditation card – Four golds, London (GBR)



Diane Leather (GBR)

1954 Silvered spikes – First women's sub-five-minute mile, Birmingham (GBR)



Doris Brown-Heritage (USA)

1967 Gold medal – 1st official women's International Cross-Country Championships, Barry (GBR)



Jacqueline Hansen (USA)

1975 Shoes – Marathon World Best First women's sub 2:40, Eugene (USA)



Irena Szewinska (POL)

1976 Spikes – Olympic 400m gold and World Record, Montreal (CAN)



Grete Waitz (NOR)

1982 shoes – undefeated season on Road races with 2 World Bests



Wendy Sly (GBR)

1983 singlet – 10km Road gold, 1st women's road race championships, San Diego (USA)



Nawal El Moutawakel (MAR)

1984 silvered spikes – 1st African woman Olympic gold in track, 400m hurdles, Los Angeles (USA)



Liz McColgan (GBR)

1991 training spikes – World Championships
10,000m gold, Tokyo (JPN)



Yvonne Murray-Mooney (GBR)

1993 spikes – World Indoor Championships 3000m
gold, Toronto (CAN)



Marie-José Pérec (FRA)

1995 singlet – World Championships 400m gold,
Göteborg (SWE)



Stacy Dragila (USA)

1997 singlet – World Indoor Championships pole
vault Gold and World Indoor Record, Paris (FRA)



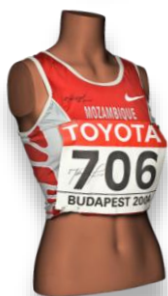
Paula Radcliffe (GBR)

2001 spikes – World Cross-Country
Championships, Ostend (BEL)



Gail Devers (USA)

2004 outfit & spikes – World Indoor Championships gold & silver (60m & 60m hurdles), Budapest (HUN)



Maria Mutola (MOZ)

2004 singlet & bib – World Indoor Championships 800m gold, Budapest (HUN)



Allyson Felix (USA)

2005 spikes – 1st of 14 World Championships golds, 200m, Helsinki (FIN)



Sally Pearson (AUS)

2014 singlet, bib & spikes – World Indoor Championships 60m hurdles silver, Sopot (POL)



Mary Keitany (KEN)

2018 outfit & shoes – New York (USA) Marathon 4th victory



Shelly-Ann Fraser-Pryce (JAM)

2022 singlet – 10th World Championships gold, 100m, Eugene (USA)



Hellen Obiri (KEN)

2023 singlet & bib – Boston (USA) marathon win



Faith Kipyegon (KEN)

2023 spikes – 1500m & 5000m World Championships gold, Budapest (HUN)



Yaroslava Mahuchikh (UKR)

2024 outfit & bib – Olympic Games high jump gold, Paris (FRA)



Sifan Hassan (NED)

2024 singlet & bib – Olympic Games marathon gold, Paris (FRA)

Women Archives Display



1er Jeux Olympiques féminins, Paris (FRA)

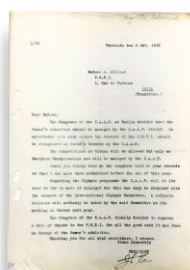
1922 Official Programme – Regulated by the
Fédération Sportive Féminine Internationale (FSFI)



Alice Milliat with the IAAF Commission

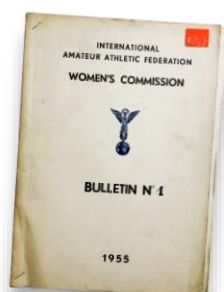
1928 Photograph – 1st Women participation in
athletics at the Olympic Games, Amsterdam (NED)

Event	Name	Record	Time	Place
100 m	Lucy Wainwright	16.8	1936	USA
200 m	Lucy Wainwright	38.2	1936	USA
400 m	Lucy Wainwright	1:12.0	1936	USA
800 m	Lucy Wainwright	2:45.0	1936	USA
1600 m	Lucy Wainwright	6:15.0	1936	USA
3200 m	Lucy Wainwright	13:45.0	1936	USA
6400 m	Lucy Wainwright	29:45.0	1936	USA
12800 m	Lucy Wainwright	1:00:45.0	1936	USA
25600 m	Lucy Wainwright	2:01:45.0	1936	USA
51200 m	Lucy Wainwright	4:02:45.0	1936	USA
102400 m	Lucy Wainwright	8:03:45.0	1936	USA
204800 m	Lucy Wainwright	16:04:45.0	1936	USA
409600 m	Lucy Wainwright	32:05:45.0	1936	USA
819200 m	Lucy Wainwright	64:06:45.0	1936	USA
1638400 m	Lucy Wainwright	128:07:45.0	1936	USA
3276800 m	Lucy Wainwright	256:08:45.0	1936	USA
6553600 m	Lucy Wainwright	512:09:45.0	1936	USA
13107200 m	Lucy Wainwright	1024:10:45.0	1936	USA
26214400 m	Lucy Wainwright	2048:11:45.0	1936	USA
52428800 m	Lucy Wainwright	4096:12:45.0	1936	USA
104857600 m	Lucy Wainwright	8192:13:45.0	1936	USA
209715200 m	Lucy Wainwright	16384:14:45.0	1936	USA
419430400 m	Lucy Wainwright	32768:15:45.0	1936	USA
838860800 m	Lucy Wainwright	65536:16:45.0	1936	USA
1677721600 m	Lucy Wainwright	131072:17:45.0	1936	USA
3355443200 m	Lucy Wainwright	262144:18:45.0	1936	USA
6710886400 m	Lucy Wainwright	524288:19:45.0	1936	USA
13421772800 m	Lucy Wainwright	1048576:20:45.0	1936	USA
26843545600 m	Lucy Wainwright	2097152:21:45.0	1936	USA
53687091200 m	Lucy Wainwright	4194304:22:45.0	1936	USA
107374182400 m	Lucy Wainwright	8388608:23:45.0	1936	USA
214748364800 m	Lucy Wainwright	16777216:24:45.0	1936	USA
429496729600 m	Lucy Wainwright	33554432:25:45.0	1936	USA
858993459200 m	Lucy Wainwright	67108864:26:45.0	1936	USA
1717986918400 m	Lucy Wainwright	134217728:27:45.0	1936	USA
3435973836800 m	Lucy Wainwright	268435456:28:45.0	1936	USA
6871947673600 m	Lucy Wainwright	536870912:29:45.0	1936	USA
13743895347200 m	Lucy Wainwright	1073741824:30:45.0	1936	USA
27487790694400 m	Lucy Wainwright	2147483648:31:45.0	1936	USA
54975581388800 m	Lucy Wainwright	4294967296:32:45.0	1936	USA
109951162777600 m	Lucy Wainwright	8589934592:33:45.0	1936	USA
219902325555200 m	Lucy Wainwright	17179869184:34:45.0	1936	USA
439804651110400 m	Lucy Wainwright	34359738368:35:45.0	1936	USA
879609302220800 m	Lucy Wainwright	68719476736:36:45.0	1936	USA
1759218604441600 m	Lucy Wainwright	137438953472:37:45.0	1936	USA
3518437208883200 m	Lucy Wainwright	274877906944:38:45.0	1936	USA
7036874417766400 m	Lucy Wainwright	549755813888:39:45.0	1936	USA
14073748835532800 m	Lucy Wainwright	1099511627776:40:45.0	1936	USA
28147497671065600 m	Lucy Wainwright	2199023255552:41:45.0	1936	USA
56294995342131200 m	Lucy Wainwright	4398046511104:42:45.0	1936	USA
112589990684262400 m	Lucy Wainwright	8796093022208:43:45.0	1936	USA
225179981368524800 m	Lucy Wainwright	17592186044416:44:45.0	1936	USA
450359962737049600 m	Lucy Wainwright	35184372088832:45:45.0	1936	USA
900719925474099200 m	Lucy Wainwright	70368744177664:46:45.0	1936	USA
1801439850948198400 m	Lucy Wainwright	140737488355328:47:45.0	1936	USA
3602879701896396800 m	Lucy Wainwright	281474976710656:48:45.0	1936	USA
7205759403792793600 m	Lucy Wainwright	562949953421312:49:45.0	1936	USA
14411518807585587200 m	Lucy Wainwright	1125899813685248:50:45.0	1936	USA
28823037615171174400 m	Lucy Wainwright	2251799813685248:51:45.0	1936	USA
57646075230342348800 m	Lucy Wainwright	4503599627370496:52:45.0	1936	USA
115292150460684697600 m	Lucy Wainwright	9007199254740992:53:45.0	1936	USA
230584300921369395200 m	Lucy Wainwright	18014398509481984:54:45.0	1936	USA
461168601842738790400 m	Lucy Wainwright	36028797018963968:55:45.0	1936	USA
922337203685477580800 m	Lucy Wainwright	72057594037927936:56:45.0	1936	USA
1844674407370955161600 m	Lucy Wainwright	144115188075855872:57:45.0	1936	USA
3689348814741910323200 m	Lucy Wainwright	288230376151711744:58:45.0	1936	USA
7378697629483820646400 m	Lucy Wainwright	576460752303423488:59:45.0	1936	USA
14757395258967641292800 m	Lucy Wainwright	1152921504606846976:00:45.0	1936	USA
29514790517935282585600 m	Lucy Wainwright	2305843009213693952:01:45.0	1936	USA
59029581035870565171200 m	Lucy Wainwright	4611686018427387904:02:45.0	1936	USA
118059162071741130342400 m	Lucy Wainwright	9223372036854775808:03:45.0	1936	USA
236118324143482260684800 m	Lucy Wainwright	18446744073709551616:04:45.0	1936	USA
472236648286964521369600 m	Lucy Wainwright	36893488147419103232:05:45.0	1936	USA
944473296573929042739200 m	Lucy Wainwright	73786976294838206464:06:45.0	1936	USA
1888946593147858085478400 m	Lucy Wainwright	147573952589676412928:07:45.0	1936	USA
3777893186295716170956800 m	Lucy Wainwright	295147905179352825856:08:45.0	1936	USA
7555786372591432341913600 m	Lucy Wainwright	590295810358705651712:09:45.0	1936	USA
15111572745182864683827200 m	Lucy Wainwright	1180591620717411303424:10:45.0	1936	USA
30223145490365729367654400 m	Lucy Wainwright	2361183241434822606848:11:45.0	1936	USA
60446290980731458735308800 m	Lucy Wainwright	4722366482869645213696:12:45.0	1936	USA
120892581961462917470617600 m	Lucy Wainwright	9444732965739290427392:13:45.0	1936	USA
241785163922925834941235200 m	Lucy Wainwright	18889465931478580854784:14:45.0	1936	USA
483570327845851669882470400 m	Lucy Wainwright	37778931862957161709568:15:45.0	1936	USA
967140655691703339764940800 m	Lucy Wainwright	75557863725914323419136:16:45.0	1936	USA
1934281311383406679529881600 m	Lucy Wainwright	151115727451828646838272:17:45.0	1936	USA
3868562622766813359059763200 m	Lucy Wainwright	302231454903657293676544:18:45.0	1936	USA
7737125245533626718119526400 m	Lucy Wainwright	604462909807314587353088:19:45.0	1936	USA
15474250491067253436239052800 m	Lucy Wainwright	1208925819614629174706176:20:45.0	1936	USA
30948500982134506872478105600 m	Lucy Wainwright	2417851639229258349412352:21:45.0	1936	USA
61897001964269013744956211200 m	Lucy Wainwright	4835703278458516698824704:22:45.0	1936	USA
123794003928538027489912422400 m	Lucy Wainwright	9671406556917033397649408:23:45.0	1936	USA
247588007857076054979824844800 m	Lucy Wainwright	19342813113834066795298816:24:45.0	1936	USA
495176015714152109959649689600 m	Lucy Wainwright	38685626227668133590597632:25:45.0	1936	USA
990352031428304219919299379200 m	Lucy Wainwright	77371252455336267181195264:26:45.0	1936	USA
1980704062856608439838598758400 m	Lucy Wainwright	154742504910672534362390528:27:45.0	1936	USA
3961408125713216879677197516800 m	Lucy Wainwright	309485009821345068724781056:28:45.0	1936	USA
7922816251426433759354395033600 m	Lucy Wainwright	618970019642690137449562112:29:45.0	1936	USA
15845632502852867518708790067200 m	Lucy Wainwright	1237940039285380274899124224:30:45.0	1936	USA
31691265005705735037417580134400 m	Lucy Wainwright	2475880078570760549798248448:31:45.0	1936	USA
63382530011411470074835160268800 m	Lucy Wainwright	4951760157141521099596496896:32:45.0	1936	USA
126765060022822940149670320537600 m	Lucy Wainwright	9903520314283042199192993792:33:45.0	1936	USA
253530120045645880299340641075200 m	Lucy Wainwright	19807040628566084398385987584:34:45.0	1936	USA
507060240091291760598681282150400 m	Lucy Wainwright	39614081257132168796771975168:35:45.0	1936	USA
1014120480182583521197362564300800 m	Lucy Wainwright	79228162514264337593543950336:36:45.0	1936	USA
2028240960365167042394725128601600 m	Lucy Wainwright	158456325028528675187087900672:37:45.0	1936	USA
4056481920730334084789450257203200 m	Lucy Wainwright	316912650057057350374175801344:38:45.0	1936	USA
8112963841460668169578900514406400 m	Lucy Wainwright	633825300114114700748351602688:39:45.0	1936	USA
16225927682921336339157801028812800 m	Lucy Wainwright	1267650600228229401496703205376:40:45.0	1936	USA
32451855365842672678315602057625600 m	Lucy Wainwright	2535301200456458802993406410752:41:45.0	1936	USA
64903710731685345356631204115251200 m	Lucy Wainwright	5070602400912917605986812821504:42:45.0	1936	USA
129807421463370690713262408230502400 m	Lucy Wainwright	10141204801825835211973625643008:43:45.0	1936	USA
259614842926741381426524816461004800 m	Lucy Wainwright	20282409603651670423947251286016:44:45.0	1936	USA
519229685853482762853049632922009600 m	Lucy Wainwright	40564819207303340847894502572032:45:45.0	1936	USA
1038459371706965525706099265844019200 m	Lucy Wainwright	81129638414606681695789005144064:46:45.0	1936	USA
2076918743413931051412198531688038400 m	Lucy Wainwright	162259276829213363391578010288128:47:45.0	1936	USA
4153837486827862102824397063376076800 m	Lucy Wainwright	324518553658426726783156020576256:48:45.0	1936	USA
8307674973655724205648794126752153600 m	Lucy Wainwright	649037107316853453566312041152512:49:45.0	1936	USA
16615349947311448411297588253504307200 m	Lucy Wainwright	1298074214633706907132624082305024:50:45.0	1936	USA
33230699894622896822595176507008614400 m	Lucy Wainwright	2596148429267413814265248164610048:51:45.0	1936	USA
66461399789245793645190353014017228800 m	Lucy Wainwright	5192296858534827628530496329220096:52:45.0	1936	USA
132922799578491587290380706028034457600 m	Lucy Wainwright	10384593717069655257060992658440192:53:45.0	1936	USA
265845599156983174580761412056068915200 m	Lucy Wainwright	20769187434139310514121985316880384:54:45.0	1936	USA
531691198313966349161522824112137830400 m	Lucy Wainwright	41538374868278621028243970633760768:55:45.0	1936	USA



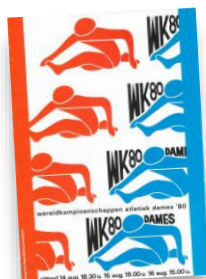
Letter from the IAAF to Alice Milliat

1936 Official IAAF Response to Alice Milliat's Advocacy for Women in Sport



Women's Commission

1955 – 1st bulletin of the IAAF Women's Commission



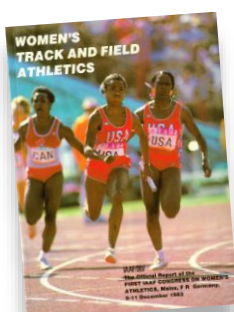
1st Women's track World Championships

1980 programme – Women's World Championships, 400m hurdles & 3000m, Sittard (NED)



1st Women's Road Race World Championships

1983 programme - 1st IAAF World Championship women's road race San Diego (USA)



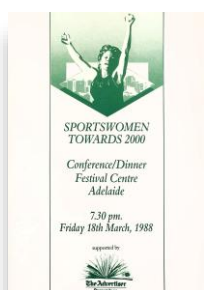
1st Congress on women's athletics

1985 Official report – Mainz (FRG)



1st International Seminar on women's athletics

1987 poster – Santa Fe (ARG)



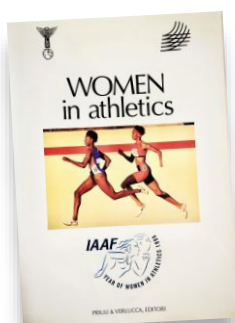
Sportswomen towards 2000

1988 Conference, World Women's Road Race Championships, signed by women's athletics legends, Adelaide (AUS)



Year of Women in Athletics logo

1998 logo – Cloth badges for the Year of Women in Athletics campaign



Year of Women in Athletics book

1998 Photographic book



80 years of Women Athletics

2008 Photographic book celebrating 80 years of Women Athletics at the Olympic Games

With gratitude to

Michael Burke

The Founding Patron
of MOWA

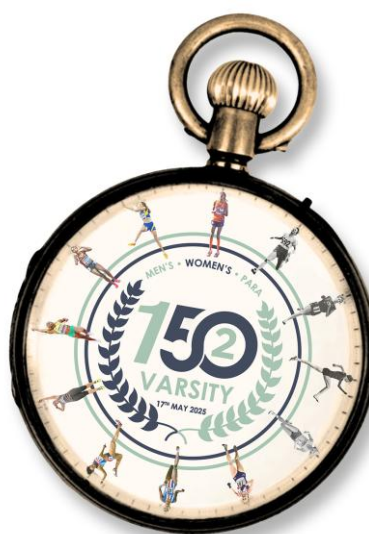
for his generous support of our
museum and this exhibition.

for his generous support of our
museum and this exhibition.

of MOWA

MOWA Pop-Up Exhibition

The Pavilion
Cambridge University Athletics Track
Wilberforce Road Sports Ground
18 Adams Road
Cambridge
CB3 9AD



Schedule

Friday 16 May 2025

17.00hrs – MOWA Display: Private opening by invitation only

Saturday 17 May 2025

MOWA Display: Open to the public all day.

10.00hrs – Competition begins

12.30hrs – World Athletics Heritage Plaques ceremony

17.45hrs – Prize Ceremony