

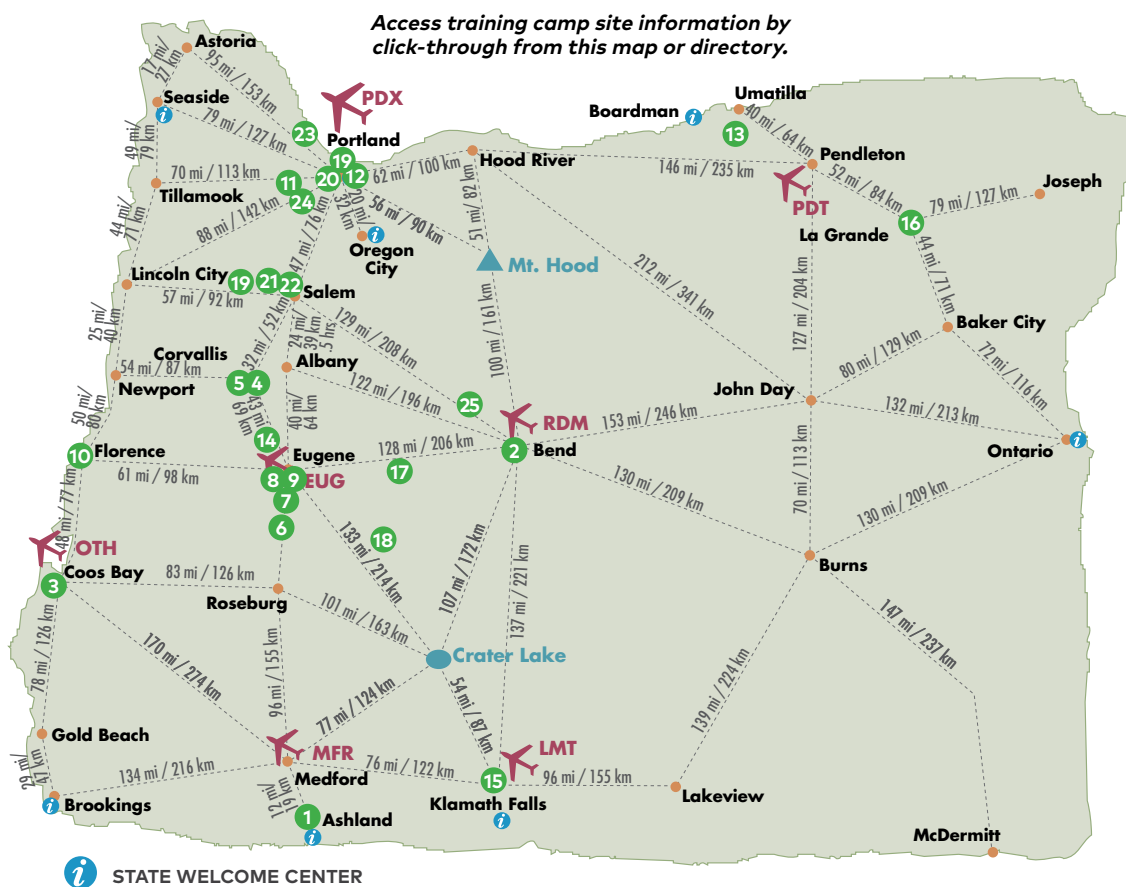


WORLD ATHLETICS CHAMPIONSHIPS OREGON22 TRAINING CAMP LOCATIONS



Welcome to our Training Camp directory!

Many federations will be looking for a location for their teams to train and acclimate in advance of World Athletics Championships Oregon22. Cities around the state of Oregon are preparing their facilities and communities to serve as pre-championships training sites for federations of all sizes. Whether you seek a city or rural environment with a track, trails and/or a field event venue — Oregon stands ready with university campuses and many other well-equipped track and field sites to meet your training, accommodation, preparation and recreation needs.



Directory

- 1 Ashland, Southern Oregon University
- 2 Bend, Central Oregon Community College
- 3 Coos Bay, Southwestern Oregon Community College & Marshfield High School
- 4 Corvallis, Corvallis Community
- 5 Corvallis, Oregon State University
- 6 Cottage Grove, Cottage Grove High School
- 7 Creswell, Creswell High School
- 8 Eugene, Marist High School
- 9 Eugene, Willamette High School
- 10 Florence, Siuslaw High School
- 11 Forest Grove, Pacific University
- 12 Gresham, Mt. Hood Community College
- 13 Hermiston, Hermiston High School
- 14 Junction City, Junction City High School
- 15 Klamath Falls, Klamath Falls Community
- 16 La Grande, Eastern Oregon University
- 17 McKenzie River Valley, McKenzie Community Track & Field
- 18 Oakridge, Oakridge High School
- 19 Polk County, Polk County Community
- 20 Portland, University of Portland
- 21 Salem, West Salem High School
- 22 Salem, Willamette University
- 23 Scappoose, Scappoose High School
- 24 Sherwood, Sherwood High School
- 25 Sisters, Sisters High School & Black Butte Ranch

TRAINING CAMP LOCATION

Southern Oregon University Ashland, Oregon

PRIMARY CONTACT

Grier Gatlin, gatling@sou.edu

GENERAL LOCATION INFORMATION

- 300 miles (482 km) from Portland International Airport
- 189 miles (304km) from Eugene Airport
- 15 miles (24 km) from Medford Airport
- 175 miles (281 km) from competition venue (Hayward Field, Eugene, OR)



NARRATIVE

Southern Oregon University is in beautiful Ashland, Oregon – Raider Stadium track is located on the 175-acre campus; was resurfaced in 2014 and offers views of the beautiful Rogue Valley. Ashland has been noted as one of the best running trail destinations in the U.S. The Lithia Motor Pavilion provides an indoor activity option with locker rooms, classrooms, offices, conference rooms, athletic training and sports medicine rooms. The Student Recreation Center includes a two-court recreational gym, suspended indoor running track, fitness center, and locker rooms. Outside of the University campus, the city of Ashland offers a world-class theater experience, culinary delights and restorative spa escapes.

FACILITY SUMMARY

- Track/Running Trails
 - USATF certified Beynon track, resurfaced in 2015, exclusive use available; nearby running trails- area is considered one of the best running trail destinations in the U.S.
- Other Facilities/Information
 - Long/Triple Jump runway
 - High jump
 - Pole Vault
 - Shot Put Ring
 - Discus/Hammer Rings
 - Long throw fields
 - Weight room
 - Fitness center
 - Training/Medical room
 - Locker Rooms

ACCOMMODATIONS

- Accommodation Type: Dormitory
Total Beds: 80 - 100
- Dining: Cafeteria available, close proximity to several café, restaurant and dining options



TRAINING CAMP LOCATION

Central Oregon Community College Bend, Oregon

PRIMARY CONTACT

Andrew Davis, apdavis@cocc.edu

GENERAL LOCATION INFORMATION

- 160 miles (257 km) from Portland International Airport
- 139 miles (223 km) from Eugene Airport
- 10 miles (16 km) from Bend/Redmond Airport
- 129 miles (208 km) from competition venue (Hayward Field, Eugene, OR)



NARRATIVE

Central Oregon Community College is in Bend, Oregon – a high desert dream nestled along the Deschutes River at the foot of the Cascade Mountains and is a haven of outdoor recreation. COCC's track is located on campus and was recently renovated the summer of 2019, surfaced with Dyna Track-S2. Nearby running trails can be found on and off campus. Delegations will utilize Wickiup Hall which features 4-person suite style accommodations with mountain views and can accommodate up to 288 guests. From high-tech boardrooms and elegant reception spaces to our newly renovated track & field and gymnasium, our facilities have something to offer any size of delegation. Our award-winning facilities also offer on-site laundry, community kitchen, quality catering and a welcoming staff.

FACILITY SUMMARY

- Track/Running Trails
 - 400m 8-lane Dyna Track-S2, renovated summer of 2019; running trails are available on and off campus – there are miles of trails throughout Central Oregon
- Other Facilities/Information
 - Long Throws Practice Field
 - Weight Room
 - Fitness Center
 - Locker Room
 - On-site Planned Housing

ACCOMMODATIONS

- Accommodation Type: Dormitory
Total Beds: 288
- Dining: Cafeteria available and many off campus cafes, restaurants are nearby



TRAINING CAMP LOCATION

Southwestern Oregon Community College & Marshfield High School Coos Bay, Oregon

PRIMARY CONTACT

Mike Herbert, mherbert@socc.edu

Janice Langlinais,
janice@oregonsadventurecoast.com

GENERAL LOCATION INFORMATION

- 237 miles (382 km) from Portland International Airport
- 107 miles (172.2 km) from Eugene Airport
- 115 miles (185 km) from competition venue (Hayward Field, Eugene, OR)



NARRATIVE

Located on the southern end of the Oregon Coast, Coos Bay is the birthplace of famed runner Steve Prefontaine. Southwestern Oregon Community College features a full 8-lane track surrounding a grass pitch perfect for barefoot running and strides or a pick-up game of soccer. Adjacent grass fields and miles of beachfront roads and trails provide additional training options. Marshfield High School, where Steve Prefontaine began his running career, features a full 6-lane track with an 8-lane 100m straight way. The track is the best facility in the region for pole vaulting as the track is in a 3-sided bowl with the two vault pits located at the closed end of the bowl out of the wind. Multiple rings allow multiple athletes to conduct footwork or limited throw practice at the same time. On-site weight facilities, either on campus or under the grandstands, include a Veritmax machine and an indoor throwing ring for discus. All with moderate temperatures, beautiful coastal views, and a quaint downtown, perfect for entertainment and relaxation.



FACILITY SUMMARY

- Track/Running Trails
 - Two track options are available, 400m 8-lane & 6-lane Beynon track resurfaced in the past 10 years, includes a steeplechase water jump/barrier; exclusive team use; nearby running trails
- Other Facilities/Information
 - Two Long/Triple Jump Runways
 - High Jump Equipment
 - Two Pole Vault Pits/Equipment
 - Shot Put Ring
 - Discus/Hammer Rings
 - Indoor Discus Area
 - Hurdles
 - Starting Blocks
 - Weight Room
 - Fitness Center
 - Training/Medical Room
 - Locker Rooms
 - On-site Planned Housing
 - Prefontaine House located 1 block from High School track.

ACCOMMODATIONS

- Accommodation Type: Dormitory
 - Total Beds: 396
- Dining: Cafeteria/on-campus dining and area restaurants

TRAINING CAMP LOCATION

Corvallis Community Corvallis, Oregon

- Four Training Camp Venue Options

PRIMARY CONTACT

Morgan Baker, morgan@visitcorvallis.com

GENERAL LOCATION INFORMATION

- 90-100 miles (144 km - 169 km) from Portland International Airport
- 35 miles (72 km) from Eugene Airport
- 40 miles (80 km) from competition venue (Hayward Field, Eugene, OR)



NARRATIVE

The historic city of Corvallis is centrally located in the heart of the Willamette Valley between Portland and Eugene in a vibrant college town surrounded by natural beauty. Recognized as Oregon's top place to live in 2019, it's the perfect venue and location for a Training Camp. The community has arranged use of four track and field venues to meet Federation training requirements. All tracks have been resurfaced in 2019 and the athletics facilities offer a broad range of field event training options. The Corvallis area has an outstanding selection of running trails as well, boasting 60+ miles of multi-use trails. The Training Camp contact will assist with accommodations which are located nearby (1km-9km) and close to restaurants, shopping and recreational activities. The community embraces the opportunity to host Federations as they prepare for the World Athletics Championships, Oregon22!



FACILITY SUMMARY

- Track/Running Trails
Four 400m 8 lane tracks, all resurfaced in summer 2019, exclusive use; outstanding selection of nearby running trails
- Other Facilities/Information
Long/Triple Jump Runway
High Jump Equipment
Pole Vault Equipment
Shot Put Ring
Discus/Hammer Rings
Long Throw & Practice Fields
Pool
Hurdles
Starting Blocks
Weight Room
Fitness Center
Training/Medical Room
Locker Rooms

ACCOMMODATIONS

- Accommodation Type(s): Hotel/Motel
Total Beds: Hotel: 770, Motel: 136
- Dining: Variety of restaurants and unique dining options in close proximity



TRAINING CAMP LOCATION

Oregon State University Corvallis, Oregon

PRIMARY CONTACT

Ryan Bucher, ryan.bucher@oregonstate.edu

GENERAL LOCATION INFORMATION

- 95 miles (152 km) from Portland International Airport
- 35 miles (56 km) from Eugene Airport
- 40 miles (64 km) from competition venue (Hayward Field, Eugene, OR)



NARRATIVE

Corvallis is a beautiful college town nestled in the heart of the Willamette Valley. An hour's drive from the Pacific Coast and two hours from the Cascades and high desert, Corvallis is an ideal site to visit. Corvallis embodies the spirit of the Northwest, with beautiful natural surroundings, friendly citizens, and an outstanding quality of life. It is one of the safest places to live - clean, friendly, and family-oriented. OSU and the Whyte Track and Field Center is an ideal location for a national team training camp. The facility was opened in 2012 and additions were completed in 2017. It is a nine-lane IAAF Certified Olympic-caliber surface with a FieldTurf infield. Immediately adjacent to the track is a new hammer/discus cage and javelin runway with overlapping sectors. The facility includes high jump aprons, long/triple jump runways/pits, pole vault and shot-put sectors. Corvallis and OSU have two main options for housing. Campus housing offers suite and dorm style space and the Hilton Garden Inn are both within walking distance of the facility. OSU and Corvallis is the prime location for a training facility for Oregon22. We look forward to hosting teams as they prepare for the 2022 World Athletics Championships.



FACILITY SUMMARY

- Track Information
IAAF Certified Olympic-caliber surface, 400M 9-lane track; nearby outstanding running trail options
- Other Facilities/Information
Long/Triple Jump Runway
High Jump Equipment
Pole Vault Equipment
Shot Put Ring
Discus/Hammer Rings
Long Throw & Practice Fields
Pool
Hurdles
Starting Blocks
Weight Room
Fitness Center
Training/Medical Room
Locker Rooms
On-site Planned Housing

ACCOMMODATIONS

- Accommodation Type(s): Dormitory/Hotel
Total Beds: Dormitory: 390, Hotel: 150 rooms
- Dining: Campus cafeteria, restaurants in close proximity with planned group meals as an option



TRAINING CAMP LOCATION

Cottage Grove High School Cottage Grove, Oregon

PRIMARY CONTACT

Richard Meyers,
citymanager@cottagegrove.org

GENERAL LOCATION INFORMATION

- 142 miles (230 km) from Portland International Airport
- 33 miles (53 km) from Eugene Airport
- 21 miles (34 km) from competition venue (Hayward Field, Eugene, OR)



NARRATIVE

Discover the All-America City of Cottage Grove, Oregon, a charming, small town just 30 minutes south of Eugene-Springfield. In addition to two 8 lane 400m tracks and a full complement of facilities and equipment, you will find live music, theatre arts and small-town favorite eateries in this city that both borders Oregon wine country and the Cascade foothills. Cottage Grove is also a prime gateway to outdoor adventuring.

FACILITY SUMMARY

- Track/Running Trails
 - Two 400m 8 lane, rubber all weather surfaces tracks; exclusive use can be accommodated; near the tracks a two-mile wood chip running trail loop and the 16-mile paved Row River Trail for road race training.
- Other Facilities/Information
 - Long/Triple Jump Runway
 - High Jump Equipment
 - Pole Vault Equipment
 - Shot Put Ring
 - Discus/Hammer Rings
 - Long Throw & Practice Fields
 - Pool
 - Hurdles
 - Starting Blocks
 - Weight Room
 - Fitness Center
 - Training/Medical Room
 - Locker Rooms

ACCOMMODATIONS

- Accommodation Type: Hotel
Total Beds: 265
- Dining: Several café, restaurant, and dining options



TRAINING CAMP LOCATION

Creswell High School **Creswell, Oregon**

PRIMARY CONTACT

Sarah Cox, sarah@camasmedical.com

GENERAL LOCATION INFORMATION

- 130 miles (209 km) from Portland International Airport
- 23 miles (37 km) from Eugene Airport
- 12 miles (19.31 km) from competition venue (Hayward Field, Eugene, OR)



NARRATIVE

Creswell, Oregon is located 10 miles south of Eugene, home of the University of Oregon and the historic Hayward Field. With a population of 5,400, Creswell is a small town with a friendly feeling, and an ideal place for a Training Camp and athletes making final preparations for the World Athletics Championships. There are two 400m (8/6 lanes) track facilities in Creswell. Nearby Emerald Valley Resort has a swimming pool, weight training center and a top-ranked 18-hole golf course. With over a dozen restaurants nearby, there are a variety of food choices available. When NCAA track championships come to Eugene, Creswell is a frequent host for college athletes wanting to stay near Eugene but still experience a small, rural town. We welcome the athletes and families coming to the World Athletics Championships, Oregon22!



FACILITY SUMMARY

- Track/Running Trails
 - Two 400m (8/6 lane) tracks in good condition; 30 miles of running trails 15 minutes from Creswell
- Other facilities and equipment
 - Long/Triple Jump Runway
 - High Jump Equipment
 - Discus/Hammer Rings
 - Long Throw & Practice Fields
 - Hurdles
 - Starting Blocks
 - Weight Room
 - Fitness Center
 - Training/Medical Room
 - Locker Rooms

ACCOMMODATIONS

- Accommodation Type: Hotel
Total Beds: 98
- Dining: Campus cafeteria available with planned group meals optional, restaurant locations nearby



TRAINING CAMP LOCATION

Marist High School Eugene, Oregon

PRIMARY CONTACT

Bart Pollard, Athletic Director,
bpollard@marisths.org

GENERAL LOCATION INFORMATION

- 124 miles (199.5 km) from Portland International Airport
- 9 miles (13.8 km) from Eugene Airport
- 5.5 miles (8.8 km) from competition venue (Hayward Field, Eugene, OR)



NARRATIVE

Marist High School is conveniently located in the heart of Eugene, Oregon. The school's brand new, private, high-level track & field facility is available to a Federation team for training prior to the World Athletics Championships, Oregon22! Marist is open to other additional need requests that are not outlined in this overview.

FACILITY SUMMARY

- Track/Running Trails
 - Beynon surfaced 400m 8 lane track, newly installed in 2018, exclusive use; outstanding running trails on the Ruth Bascom River Path System (13+ miles of paved riverside running and just 6.4km from Pre's Trail (a 6km bark-chip trail)).
- Other Facilities/Information
 - Long/Triple Jump Runway
 - High Jump Equipment (New Pit)
 - Pole Vault Equipment (New Pit)
 - Javelin Runway
 - Shot Put Ring
 - Discus Ring
 - Hurdles
 - Starting Blocks
 - Weight Room
 - Fitness Center
 - Training/Medical Room
 - Locker Rooms
 - Turf Infield
 - 40 acres of campus accessible on varied surfaces
 - Air-conditioned meeting rooms 50 yards from the track facility by request

ACCOMMODATIONS

- Accommodation Type: Hotel
 - Many hotel options conveniently located in the Eugene, Oregon area. The Valley River Inn being the closest to this site.
- Dining: Many restaurant options are located near this facility, the closest in proximity surround the Valley River Center mall.



TRAINING CAMP LOCATION

Willamette High School Eugene, Oregon

PRIMARY CONTACT

Alisha Dodds, Alisha.Dodds@bethel.k12.or.us

GENERAL LOCATION INFORMATION

- 4.6 miles from Eugene Airport; 125 miles to Portland International Airport.
- Within Eugene city limits
- Lane Transit District bus (LTD); Taxi services, Uber, Lyft.
- 6.2 miles to Marist Catholic High School



NARRATIVE

The Bethel School District would love to be involved in hosting a country for Oregon22! We have a number of facilities that could be used for events, dining, activities etc. We would be thrilled to welcome any/all athletes and potentially host and event so that students could meet them or watch them practice. The Bethel School District is one that prides itself on being connected to the community as well as public service. If there's anything that we can assist with, we would love to play a role!

FACILITY SUMMARY

- 400m surfaced track
Benyon Sports BSS 100 surface, installed September 2020 (Not used until spring 2021). Includes an entirely new from the ground-up subsurface. A paved-in-place surface product with a polyurethane binder and recycled SBR (rubber) granules, finished with multiple sprays of polyurethane and synthetic rubber granules.



Other Facilities/Information

Long/triple jump runway
High jump equipment
Pole vault equipment
Shot put ring
Discus
Long throw field
Long throw practice field:
Starting blocks
Hurdles
Nearby running trails
Access to pool
Access to weight room
Access to training/medical room
Access to locker room/showers
Restrooms
Stadium/Night lighting

ACCOMMODATIONS

- Accommodation Type: Hotel
Many hotel options conveniently located in the Eugene, Oregon area.
- Dining: Many restaurant options are located near this facility.

TRAINING CAMP LOCATION

Siuslaw High School Florence, Oregon

PRIMARY CONTACT

Sarah Moehrke,
sarah.moehrke@ci.florence.or.us

GENERAL LOCATION INFORMATION

- 174 miles (108 km) from Portland International Airport
- 59 miles (36 km) from Eugene Airport
- 63 miles (39 km) from competition venue (Hayward Field, Eugene, OR)



NARRATIVE

With a prime location on the Central Oregon Coast at the mouth of the Siuslaw River, Florence offers all the region's perks in one visit. Visitors come to Florence to experience the beautiful Oregon Coast, the Oregon Dunes National Recreation Area, Florence's historic Old Town district with a boardwalk and a variety of shops, and more. This historic riverfront town is just an hour west of Eugene. Everything you need is located within a 5-mile radius! Florence has some of the best soft surface trails anywhere in the world. There are approximately a dozen choices within 15 miles varying in terrain. The Siuslaw School District track is a 400m 8-lane oval and a brand-new Beynon BSS 300 surface. All jumping areas are newly resurfaced as well. The stadium has covered grandstands lighting for night training. Our facility is one of the nicest in the state of Oregon. With the mild weather, low pollen, and close proximity to Eugene, it is the perfect destination for a Federation to do final preparations for the 2022 World Athletics Championships!



FACILITY SUMMARY

- Track/Running Trails
New Beynon BSS 300 Surface, 400m 8-lane track; outstanding running trails, terrain varies
- Other Facilities/Information
Long/Triple Jump Runway
High Jump Equipment
Pole Vault Equipment
Shot Put Ring
Discus/Hammer Rings
Long Throw & Practice Fields
Hurdles
Starting Blocks
Weight Room
Fitness Center
Training/Medical Room
Locker Rooms
- Indoor meeting venue: Florence Events Center

ACCOMMODATIONS

- Accommodation Type: Hotel
Total Beds: 529
- Dining: Restaurant dining with planned group meals as an option.



TRAINING CAMP LOCATION

Pacific University Forest Grove, Oregon

PRIMARY CONTACT

events@pacificu.edu

GENERAL LOCATION INFORMATION

- 35 miles (56 km) from Portland International Airport
- 116 miles (187 km) from Eugene Airport
- 115 miles (185 km) from competition venue (Hayward Field, Eugene, OR)



NARRATIVE

On the west edge of the Portland Metro Area, Forest Grove offers perfect proximity to the city and the great outdoors. Pacific University is just a short drive or public transit ride from downtown Portland, an hour away from the Oregon Coast or Cascade Mountains. The track and field facilities are outstanding. The 400-meter oval is one of few nine-lane facilities in the Northwest. The center pitch is composed of FieldTurf, which is also used by teams in the English and Scottish premier leagues. The stadium's long jump pits are uniquely located between the straightaway and the stadium seating area. Natural grass practice fields are located just north of the stadium. The field doubles as the throwing venues for the javelin, discus and hammer. Pacific University hosted several teams before the 2014 IAAF World Junior Championships and welcome the opportunity to host Federation training camps for the World Athletics Championships, Oregon22!



FACILITY SUMMARY

- Track/Running Trails
USATF certified Beynon 9 lane track, resurfaced in 2019, exclusive use; nearby running trails
- Other Facilities/Information
Long/Triple Jump Runway
High Jump Equipment
Pole Vault Equipment
Shot Put Ring
Discus/Hammer Rings
Long Throw & Practice Fields
Hurdles
Starting Blocks
Pool Access
Weight Room
Fitness Center
Training/Medical Room
Locker Rooms
On-site Planned Housing

ACCOMMODATIONS

- Accommodation Type: Hotel, Total beds: 184 rooms (spread out over three hotels)
- Dining: Campus cafeteria, close proximity to several café, restaurant and dining options.



TRAINING CAMP LOCATION

Mt. Hood Community College **Gresham, Oregon**

PRIMARY CONTACT

Kim Hyatt, kim.hyatt@mhcc.edu

GENERAL LOCATION INFORMATION

- 15 miles (23.9 km) from Portland International Airport
- 133 miles (214 km) from Eugene Airport
- 130 miles (209 km) from competition venue (Hayward Field, Eugene, OR)



NARRATIVE

Whether your interests are the hustle and bustle of a big city or the wide-open solitude of nature, Mt. Hood Community College is the perfect place to host your Training Camp. Located in Gresham, Oregon, just 16 miles from Portland International Airport or urban downtown Portland, and near two of Oregon's premiere recreation sites - Mt. Hood and the Columbia River Gorge, the area offers a multitude of recreational opportunities. The college is situated on 140 acres of naturally wooded beauty including miles of walking trails with numerous dining and lodging options nearby. The track and field facility is one of the finest in the state, hosting recent events such as the TrackTown USA Summer Series, NWAC Track and Field Championships and the OSAA State Track and Field Championships. Mt. Hood Community College looks forward to hosting a Federation's Training Camp!



FACILITY SUMMARY

- Track/Running Trails
BSS 1000 5 mm, resurfaced in August 2013, 400m 8 lane track, exclusive use; running trails on-site and in nearby area
- Other Facilities/Information
Long/Triple Jump Runway
High Jump Equipment
Pole Vault Equipment
Shot Put Ring
Discus/Hammer Rings
Long Throw & Practice Fields
Hurdles
Starting Blocks
Pool Access
Weight Room
Fitness Center
Training/Medical Room

ACCOMMODATIONS

- Accommodation Type(s): Hotel/Motel
Total Beds: Hotel: 1200-1300, Motel: 250-300
- Dining: Campus cafeteria, restaurants in close proximity with planned group meals as an option



TRAINING CAMP LOCATION

Hermiston High School Hermiston, Oregon

PRIMARY CONTACT

Larry Usher, larry.usher@hermiston.k12.or.us

GENERAL LOCATION INFORMATION

- 185 miles (291 km) from Portland International Airport
- 300 miles (482 km) from Eugene Airport
- 293 miles (471 km) from competition venue (Hayward Field, Eugene, OR)

NARRATIVE

Kennison Stadium is a facility that was constructed in 2013 and in 2015 was voted the best high school outdoor venue in the State of Oregon by the Oregonian Newspaper. Our facility includes a state of the art eight lane track with electronic timing system and hard-wired network connections in both the field and booths upstairs. Our stadium is equipped with security video surveillance as well. Adjacent to the track we have an up-to-date jumps area, and two long jump/triple jump runways. Just to the west of our stadium is our shot put, javelin and discus throws area. Less than one hundred feet from our track is our brand-new weight room updated in the summer of 2019.



FACILITY SUMMARY

- Track/Running Trails
IAAF and USATF certified, 400m 8 lanes synthetic all-weather surface, exclusive use, new in 2013; nearby running trails
- Other Facilities/Information
Long/Triple Jump Runway
High Jump Equipment
Pole Vault Equipment
Shot Put Ring
Discus/Hammer Rings
Long Throw & Practice Fields
Hurdles
Starting Blocks
Pool Access
Weight Room
Fitness Center
Training/Medical Room
Locker Rooms
On-site Planned Housing

ACCOMMODATIONS

- Accommodation Type: Hotel
Total Beds: 300+
- Dining: Campus cafeteria and restaurants with planned group meals



TRAINING CAMP LOCATION

Junction City High School **Junction City, Oregon**

PRIMARY CONTACT

Shannon McAdams,
smcadams@junctioncity.k12.or.us

GENERAL LOCATION INFORMATION

- 100 miles (160.63 km) from Portland International Airport
- 6 miles (9.65 km) from Eugene Airport
- 16 miles (25.74 km) from competition venue (Hayward Field, Eugene, OR)



NARRATIVE

Junction City is a small town with a big heart nestled in the southern Willamette Valley. The campus of Junction City High School is quiet during the summer; perfect for athletes wanting to privately prepare for the 2022 World Athletics Championships. The 400m 8-lane track was resurfaced by Beynon in 2018 along with many other upgrades (new hurdles, beautiful soft sand and realignment of event areas). Our weight room is augmented by private gym with high-end equipment and cross-training facilities. Accommodations can be coordinated in town or nearby Eugene and the surrounding areas. There are a plethora of meal options in town and in nearby communities, along with the opportunity to explore the bounty of the Willamette Valley and beyond. Enjoy some of the best wines in the USA, explore majestic mountains or rivers, or take a walk along our many coastal beaches. There are plenty of recreational opportunities for athletes and their families. Our athletes, coaches and community stand ready to work with any perspective Federation that would like an ideal training location in preparation for Oregon22!



FACILITY SUMMARY

- Track/Running Trails
Resurfaced 400m Beynon track in 2018; running trails in Eugene and surrounding areas
- Other Facilities/Information
Long/Triple Jump Runway
High Jump Equipment
Pole Vault Equipment
Shot Put Ring
Discus/Hammer Rings
Long Throw & Practice Fields
Pool
Hurdles
Starting Blocks
Weight Room
Fitness Center
Training/Medical Room
Locker Room

ACCOMMODATIONS

- Accommodation Type(s): Hotel/Motel
Total Beds: 69
RV Park with 55 spaces
- Dining: Restaurants in close proximity with planned group meals as an option



TRAINING CAMP LOCATION

Klamath Falls Community Klamath Falls, Oregon

- Seven Training Camp Venue Options

PRIMARY CONTACT

Jim Chadderdon,
jimc@discoverklamath.com

GENERAL LOCATION INFORMATION

- 365 miles (587 km) from San Francisco International Airport
- 291 miles (468 km), from Portland International Airport
- 184 miles (304km) from Eugene Airport
- 172 miles (281 km) from competition venue (Hayward Field, Eugene, OR)



NARRATIVE

Enjoy staying, training, and recreating in Klamath Falls and the Klamath Basin during the World Athletics competition. The community, nestled on the eastern edge of the Cascade Mountain range, has a city population of nearly 50,000 and a county population of 68,000. Klamath Falls is one of the few high-elevation training sites in Oregon. The city of Klamath Falls is 4094' (1248m) above sea level, with local trails ranging from 6000' (1829m) to over 9000' (2743m) above sea level. Klamath Falls enjoys 320 days of sunshine and temperatures in July 2022 will be 70-80 degrees Fahrenheit (21-27 Celsius). There are multiple training facilities available to choose from, including one college and six high-schools. Each with different facilities, but in general there are tracks, locker rooms, showers, fitness centers and more. Klamath Falls is the home of Crater Lake National Park, Oregon's only National Park. The location is accessible by train as well:

- AMTRAK (USA train system): 2x Daily from Los Angeles and San Francisco to Klamath Falls and 2x Daily from Klamath Falls to Eugene



FACILITY SUMMARY

- Condition of Tracks
7 facilities available, Benyon, Benyon 300, and Atlas, all re-surfaced in recent years, exclusive usage; extensive running trails, trail surfaces include hard-packed dirt, packed gravel, and paved country roads with light or no traffic or congestion
- Other Facilities and Equipment:
Long/Triple Jump Runway
High Jump Equipment
Pole Vault Equipment
Shot Put Ring
Discus/Hammer Rings
Long Throw & Practice Fields
Pool
Hurdles
Starting Blocks
Weight Room
Fitness Center
Training/Medical Room
Locker Rooms

ACCOMMODATIONS

- Accommodation Type(s): Hotels/Motels, Dormitory
Total Beds: Hotels: 2,000+, Dormitory: 100
Community members may wish to host team members in private homes
- Dining: Variety of restaurants and unique dining options in close proximity

TRAINING CAMP LOCATION

Eastern Oregon University La Grande, Oregon

PRIMARY CONTACT

Kris Martens, schedule@eou.edu

GENERAL LOCATION INFORMATION

- 170 miles from Boise airport
- 258 miles (415 km) from Portland International Airport
- 376 miles (605 km) from Eugene Airport
- 370 miles (595 km) from competition venue (Hayward Field, Eugene, OR)

NARRATIVE

Located in the lush northeast corner of Oregon, Eastern Oregon University offers the best of this rural region. Eastern Oregon's scenic campus sits at 2,785 ft (849 meters) above sea level in a mountain valley. Alpine lakes,

trails and wilderness areas range from 1,280 to 2,164 meters elevation, and are as close as two miles from La Grande's picturesque downtown. Athletes and families will enjoy a drive-in movie theater, boutique shopping and eateries, and an array of fresh foods from our tight-knit community of farmers and ranchers. The only training facility on the eastern side of the state, EOU makes the most of Oregon's sunnier and less populated region. The brand-new track and field facility pairs with suite-style accommodations and a fitness training center. Discover the Eastern Edge at Eastern Oregon University!

FACILITY SUMMARY

- Track/Running Trails
Newly refurbished Beynon 400m 8-lane track, complete with steeple chase; running trails nearby as well as maintained trails atop Mt. Emily

Other facilities/Information

Long/Triple Jump Runway
High Jump Equipment
Pole Vault Equipment
Shot Put Ring
Discus/Hammer Rings
Long Throw & Practice Fields
Hurdles
Starting Blocks
Weight Room
Fitness Center
Training/Medical Room
Locker Rooms
On-site Planned Housing

ACCOMMODATIONS

- Accommodation Type: Dormitory
Total Beds: 84
- Dining: Campus cafeteria, alternative dining in close proximity with planned group meals as an option



TRAINING CAMP LOCATION

McKenzie Community Track & Field McKenzie River Valley, Oregon

PRIMARY CONTACT

Alice Bonasio, alicebonasio@gmail.com

GENERAL LOCATION INFORMATION

- 148 miles (238 km) from Portland International Airport
- 52 miles (84 km) from Eugene Airport
- 43 miles (69 km) from competition venue (Hayward Field, Eugene, OR)



NARRATIVE

Located just 40 miles east of Eugene, in the heart of the McKenzie River Valley, the McKenzie Community Track and McKenzie High School is the perfect Training Camp facility for teams competing in the 2022 World Athletics Championships. Designed and built a few years ago by the same architects and contractors who renovated Hayward Field, the McKenzie Community Track has the same surfaces and dimensions as Hayward Field. Located in the breathtaking setting of the foothills of the Cascade Mountains and in tandem with the nearby training and lodging facilities, we offer everything a world class athlete will need to prepare and compete at the highest levels. The McKenzie River Valley is one of the most beautiful landscapes on Earth. Six communities came together and developed the McKenzie Community Track/Field for our children and the community. We are proud to be able to offer the facility to international teams preparing for this world class event. We welcome the opportunity to not only host, but also to share the most special places we know to visitors from all over the world.



FACILITY SUMMARY

- Track/Running Trails
400m 8-lane track recently built and is NCAA certified, exclusive use is an option; the area offers outstanding trail running – the McKenzie River Trail (24 miles/38 km)
- Other facilities/Information
Long/Triple Jump Runway
High Jump Equipment
Pole Vault Equipment
Shot Put Ring
Discus/Hammer Rings
Long Throw & Practice Fields
Hurdles
Starting Blocks
Weight Room
Fitness Center
Training/Medical Room
Locker Rooms

ACCOMMODATIONS

- Accommodation Type(s): Hotel/Motel/Dormitory
Total Beds: Hotel: 75, Motel: 300, Dormitory: 200
- Dining: Cafeteria and restaurant with planned group meals as an option



TRAINING CAMP LOCATION

Oakridge High School Oakridge, Oregon

PRIMARY CONTACT

Kathy Holston, mayor@ci.oakridge.or.us

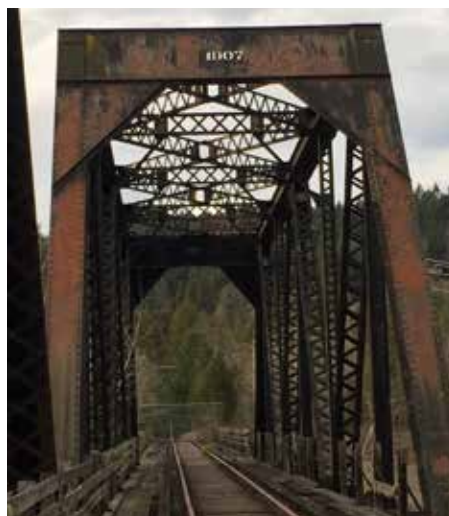
GENERAL LOCATION INFORMATION

- 150 miles (241 km) from Portland International Airport
- 52 miles (84 km) from Eugene Airport
- 45 miles (72 km) from competition venue (Hayward Field, Eugene, OR)



NARRATIVE

The City of Oakridge, Oakridge-Westfir Chamber of Commerce and the Oakridge School District offers a memorable experience to a visiting federation. The hospitality and recreational businesses will lead the effort and introduce our international guests to a unique setting, just 45 minutes from Hayward Field. One of the few cities in the entire United States surrounded by national forest, Oakridge offers miles of trails in the Willamette National Forest for mountain biking, hiking and cross country running. The serenity of our forest is conducive to athletes who wish to enhance both their mental acuity, physical strength, focus and relax. We will work with local tour companies to arrange activities at the request of visiting team. Opportunities for ancient forest excursions, trips to nearby



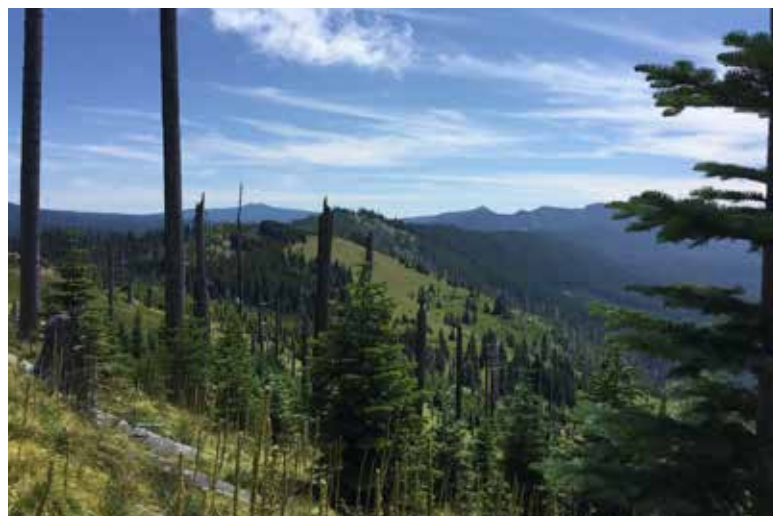
Crater Lake National Park, visiting a fire lookout tour, Museum tours, outdoor education, fly fishing, paddling, rafting, and play at our 18 hole "Old Mill Disc Golf Course" are but a few of the activities available.

FACILITY SUMMARY

- Track/Running Trails
400M 8 lane, All Weather-Atlas L-3000 Black latex bound track; National Forest trails varying in mileage and terrain
- Other Facilities/Information
Track access and running trails

ACCOMMODATIONS

- Accommodation Type: Motel
Total Beds: 84
- Dining: Restaurants with planned group meals as an option



TRAINING CAMP LOCATION

Polk County Community Three Training Camp Venues Polk County, OR

PRIMARY CONTACT

Debbie McCune, dmccune@travelsalem.com

GENERAL LOCATION INFORMATION

- 75miles (122km) from Portland International Airport
- 55 miles (90 km) from Eugene Airport
- 66-75 miles (107-122km) from competition venue (Hayward Field, Eugene, OR)



NARRATIVE

Located in the heart of Oregon is Polk County: a pastoral landscape of rolling hills, fields, and streams in the Willamette Valley, dotted with small farms and dozens of vineyards and wineries, less than 20 km away from the state capital of Salem. Polk County is the ideal centralized location for a Training Camp in the state of Oregon. The urban center of Portland is just one hour to the north, the competition site in Eugene just one hour south, and the rugged and beautiful Pacific coast just one hour to the west. Here you will find outstanding track and field options, running trails, a scenic wildlife refuge, wineries, hop farms, and the welcoming communities of Monmouth, Independence, and Dallas. Each venue features excellent track and field facilities and a wide range of amenities that will accommodate any federation size including the options of modern on-site lodging and dining, a boutique hotel overlooking the spectacular Willamette River or full-service hotel lodging. Running trails are abundant including an expansive riverfront park with water access, and a live music series throughout the summer months.



FACILITY SUMMARY

- Track/Running Trails
Three 400m 8-lane tracks, international standard, Beynon BSS 200 resurfacing scheduled 2020; nearby running trails
- Other Facilities/Information
Long/Triple Jump Runway
High Jump Equipment
Pole Vault Equipment
Shot Put Ring
Discus/Hammer Rings
Long Throw
Hurdles
Starting Blocks
Weight Room
Fitness Center
Training/Medical Room
Locker Rooms

ACCOMMODATIONS

- Accommodation Type(s) & Total Beds:
Western Oregon University – Dormitory
Dallas High School – Located near a boutique hotel
Central High School – Full-service hotel located nearby
Total Beds: Hotel: 261 Dormitory: +3000
- Dining:
Cafeteria dining available at the university and surrounding area dining options available for all locations.



TRAINING CAMP LOCATION

University of Portland Portland, Oregon

PRIMARY CONTACT

Dan Seabeck, seabeck@up.edu

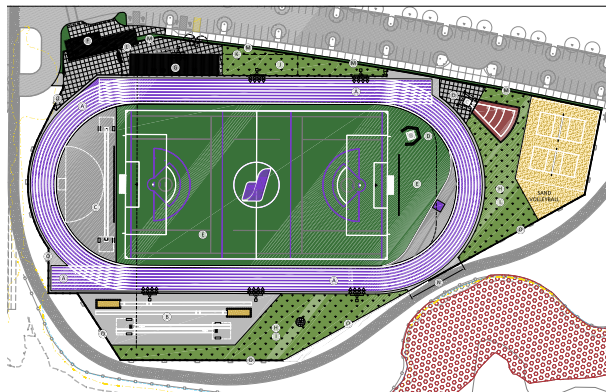
GENERAL LOCATION INFORMATION

- 7 miles (11 km) from Portland International Airport
- 107 miles (172 km) from Eugene Airport and & Competition Venue (Hayward Field, Eugene, OR)



NARRATIVE

The University of Portland offers a visiting team warm hospitality and many services in one beautiful location on the bluff just 8 kilometers down river from the vibrant city of Portland, Oregon. Renowned for its wonderful dining options, coffee shops, breweries, wine bars, Portland also provides easy access to the scenic Pacific Coast, Mt. Hood, and waterfalls within an hour or two. In addition to lodging options at UP, our highly-skilled culinary team serves tasty foods including options for many dietary needs, responsibly sourced. The on-site Track & Field offerings include a new 8-lane surfaced track (design image included), as well as training facilities, work-out facilities, and indoor tracks. Local trails are plentiful. Riverside trails exist on and around campus, road-running opportunities are plentiful in the neighborhood. And just across the river in Forest Park, there are 80 miles of hiking and running trails. As the nearest city with an international airport, University of Portland is ideal for training for Oregon22. Exclusive use is an option. We look forward to serving you.



FACILITY SUMMARY

- Track/Running Trails
 - New 400M 8-lane track, exclusive use is an option; outstanding riverside trails, road-running and 80 miles of trails nearby at Forest Park
- Other Facilities/Information (New)
 - Long/Triple Jump Runway
 - High Jump Equipment
 - Pole Vault Equipment
 - Shot Put Ring
 - Hurdles
 - Starting Blocks
 - Weight Room
 - Fitness Center
 - Training/Medical Room
 - On-Site Planned Housing

ACCOMMODATIONS

- Accommodation Type: Dormitory
 - Total Beds: 414
- Dining: Campus option includes a highly-skilled culinary team serving a variety of food options for many dietary needs, responsibly sourced; many restaurants nearby as well



TRAINING CAMP LOCATION

West Salem High School Salem, Oregon

PRIMARY CONTACT

Wendy Stradley,
STRADLEY_WENDY@salkeiz.k12.or.us

GENERAL LOCATION INFORMATION

- 60 miles (97 km) from Portland International Airport
- 67 miles (107 km) from Eugene Airport
- 66 miles (106 km) from competition venue (Hayward Field, Eugene, OR)



NARRATIVE

West Salem High School is a secondary school serving students from grades 9-12 located in the west hills of Salem, Oregon. It sits on 5 acres of land and includes sporting facilities for athletics, fútbol, American football, basketball, and weight training. The school is situated just off a thoroughfare and along a public transit route with a large grocery store and several dining options close by. A short ten-minute drive across the bridge will take you to a mid-sized downtown with many shopping, dining options and entertainment options, including two cinemas. Full-service hotel accommodations are available within 5.5 km.



FACILITY SUMMARY

- Track/Running Trails
Recently resurfaced, 400m 8 lane track
- Other Facilities/Information
Long/Triple Jump Runway
High Jump Equipment
Pole Vault Equipment
Shot Put Ring
Discus/Hammer Rings
Long Throw & Practice Fields
Hurdles
Starting Blocks
Weight Room
Fitness Center
Training/Medical Room
Locker Rooms

ACCOMMODATIONS

- Accommodation Type: Hotel
Total Beds: 3740
- Dining: Close proximity to several café, restaurants and other dining options

TRAINING CAMP LOCATION

Willamette University Salem, Oregon

PRIMARY CONTACT

Rob Passage, rpassage@willamette.edu

GENERAL LOCATION INFORMATION

- 60 miles (97 km) from Portland International Airport
- 65 miles (104 km) from Eugene Airport
- 66 miles (106 km) from competition venue (Hayward Field, Eugene, OR)



NARRATIVE

Willamette University is located in the heart of downtown Salem and one block away from the Oregon State Capitol building. Founded in 1842, it is the oldest university in the western United States. The Sparks Athletic Center houses two gyms including the Cone Field House, swimming pool, two locker rooms, a newly renovated fitness center, and a spacious training room. McCulloch Stadium is home to the football team and track and field teams for Willamette. Right behind the stadium, Bush Park is the site of many cross-country meets. Tennis courts are also available right on campus. Various award-winning restaurants and coffee shops are a short walk away. Downtown Salem contains dozens of fun activities and attractions, including three movie theaters and two shopping malls. Willamette has dorm rooms available and there are also several hotels within 3 miles of the school.



FACILITY SUMMARY

- Track/Running Trails
400m 8-lane track; running trails are bush bark
- Other Facilities/Information
Long/Triple Jump Runway
High Jump Equipment
Pole Vault Equipment
Shot Put Ring
Discus/Hammer Rings
Long Throw Field
Pool
Hurdles
Starting Blocks
Weight Room
Fitness Center
Training/Medical Room
Locker Rooms
On-site Planned Housing

ACCOMMODATIONS

- Accommodation Type(s): Hotel/Dormitory
Total Beds: Hotel: 3740, Dormitory: 100
- Dining: Campus cafeteria, alternative restaurants in close proximity with planned group meals as an option



TRAINING CAMP LOCATION

Scappoose High School **Scappoose, Oregon**

PRIMARY CONTACT

Wela Negelspach,
wnegelspach@columbiacountyoregon.com

GENERAL LOCATION INFORMATION

- 25 miles; 51.4 km from Portland International Airport
- 135 miles; 218 km from Eugene Airport
- 132 miles; 212 km from competition venue (Hayward Field, Eugene, OR)



NARRATIVE

A small town of 7200 with a big heart, Scappoose is just a short, scenic 25-mile drive along the Columbia River from Portland. In-between workouts, teams can enjoy beautiful views of Mt. Hood and Mt. St. Helens from the track. The school is located right on Hwy 30 in the middle of town within walking distance of a large grocery store and dining options. At the northern edge of town is the beautiful Crown Zellerbach Trail. It runs for 27 miles from Scappoose to Vernonia and provides a wonderful nature viewing experience where you might see a Great Blue Heron by the river or other wildlife further up the trail.

FACILITY SUMMARY

- Track/Running Trails
Resurfaced Summer 2021, 400m track;
Crown Zellerbach Trail, 27 miles of paved and unpaved from Scappoose to Vernonia with many access points along the way
- Other Facilities/Information
Long/Triple Jump Runway
High Jump Equipment
Pole Vault Equipment
Shot Put Ring
Discus/Hammer Rings
Long Throw
Hurdles
Starting Blocks
Weight Room
Fitness Center
Training/Medical Room
Locker Rooms

ACCOMMODATIONS

- Accommodation Type(s): Hotel
Total Beds: 120
- Dining: Campus cafeteria, surrounding area restaurants



TRAINING CAMP LOCATION

Sherwood High School Sherwood, Oregon

PRIMARY CONTACT

Corey Kearsley, corey@sherwoodchamber.org

GENERAL LOCATION INFORMATION

- 15 miles (24 km) from Portland International Airport
- 99 miles (159 km) from Eugene Airport
- 100 miles (160 km) from competition venue (Hayward Field, Eugene, OR)



NARRATIVE

Located only 100 miles (160 km) north of Eugene on the southern edge of the Portland metropolitan region, Sherwood's new state-of-the-art high school and track and field facilities will serve as a terrific Training Camp for any federation. Staff, student athletes, and the city of Sherwood are eager and anxious to serve as host. Nestled in the heart of the Willamette Valley and surrounded by the Tualatin and Chehalem Mountains, Sherwood residents appreciate easy access to farms and vineyards while being minutes away from downtown Portland, Nike's World Headquarters and Portland International Airport. Approximately 20,000 people call Sherwood home. With a quaint downtown, good health care facilities, outstanding schools, and a strong sense of community, it's easy to understand why Sherwood has been named by Money Magazine the 5th best small town in America.



FACILITY SUMMARY

- Track/Running Trails
 - 400m 8-lane Benyon track surface, first competitions on the track being held in the spring of 2021; the facilities will be in pristine condition! Exclusive use possible; Miles of paved trails throughout town, running trails within 15 minutes
- Other Facilities/Information
 - Long/Triple Jump Runway
 - High Jump Equipment
 - Pole Vault Equipment
 - Shot Put Ring
 - Discus Ring
 - Long Throw & Practice Fields
 - Hurdles
 - Starting Blocks
 - Weight Room
 - Fitness Center
 - Training/Medical Room
 - Locker Rooms

ACCOMMODATIONS

- Accommodation Type: Hotel
 - Total Beds: 73 Room
- Dining: Breakfast is provided at the hotel; School kitchens and dining area will also be available for Federations use.
- Pool



TRAINING CAMP LOCATION

Sisters High School & Black Butte Ranch Sisters, Oregon

PRIMARY CONTACT

Gary Thorson, gary.thorson@ssd6.org

GENERAL LOCATION INFORMATION

- 165 miles (265 km) from Portland International Airport
- 116 miles (187km) from Eugene Airport
- 21 miles (34 km) from Bend/Redmond Airport
- 108 miles (174 km) from competition venue (Hayward Field, Eugene, OR)



NARRATIVE

Central Oregon is surrounded by mountains, lakes and streams and is noted for its abundance of outdoor activity options. Central Oregon is a hub for athletics-based education and communities committed to healthy lifestyles. The Sisters High School track, stadium and locker rooms have been recently upgraded and are both beautiful and functional. Facilities include two gyms, weight room, multi-purpose room and training room. The campus is surrounded by dozens of running trails including trails winding through national forest land. The city of Sisters is named after the trio of towering mountain peaks to its west, and is a vibrant, welcoming community with a charming 1880s facades and small-town ambiance known for its arts, food, and many cultural events.



FACILITY SUMMARY

- Track/Running Trails
IAAF certified 400m, 8 lane, Beynon track updated in 2016; exclusive use available; miles of running trail options, one of the best trail destinations in the U.S.
- Other Facilities/Information
Long/Triple Jump Runway
High Jump Equipment
Pole Vault Equipment
Shot Put Ring
Discus/Hammer Rings
Long Throw & Practice Fields
Pool
Hurdles
Starting Blocks
Weight Room
Fitness Center
Training/Medical Room
Locker Rooms

ACCOMMODATIONS

- Accommodation Type(s): Hotel/Dormitory
Total Beds: Hotel: 21, Dormitory: 120
- Dining: Close proximity to restaurants with planned group meals as an option





WORLD ATHLETICS
CHAMPIONSHIPS
OREGON 22

TRAVEL



OREGON

